



Glenforest Secondary School

We welcome the world...





offer the best
expect the best
...to be the best





The International Baccalaureate Diploma Programme

@

Glenforest Secondary School

Mission Statement

The International Baccalaureate Organization (IBO) aims to develop inquiring, knowledgeable and caring young people who help to create a better and more peaceful world through intercultural understanding and respect.



What makes the IB Diploma Unique

The critical thinking aspect of ToK, at the centre of the Hexagon is a thread which weaves through all of the academic courses. The IB Diploma Programme expects students to embrace the philosophy represented by the center of the Hexagon in their approach to all of their courses.

The strength and value of the IB diploma is that students are provided with experiential learning opportunities and encouraged to reflect upon their learning.

The Centre of the Hexagon

Theory of Knowledge (TOK)

- Each diploma candidate must complete a semester long course which aims to teach students the basic Philosophy of Thought.
- Diploma candidates must write a TOK essay of 1200-1600 words.

Creativity, Action, Service (CAS)

- 150 hours community service over 1.5 years
- Approximately 50 hours each of creativity, action and service

Extended Essay

- Must be submitted to receive diploma
- Approx. 4,000 word essay
- Topic of the student's choice

The Link between Tok and CAS and EE

ToK, the "Jewel in the Crown" is the driving force of the entire IB Programme

EE - What is learned in ToK helps students analyze themselves so that they can identify what they are interested in exploring through the Extended Essay.

CAS - ToK helps students identify the aspects of the learning outcomes which they possess and those which they need to further develop. With this knowledge, students can appropriately plan their CAS activities.

IB Diploma Requirements

- The IB Programme Provides a framework for students to receive a broad based liberal arts education.
- Students must complete the requirements of CAS, EE and ToK
- Students complete 6 courses by the end of their Diploma (grade 12) year
- It is important to choose courses from within the framework that will provide students with the most manageable course load.

IB Courses

- Courses are classified as either Higher Level or Standard Level
- All courses have a final exam, which is worth 50-80% of the final mark (exams are conducted in May)
- Portfolios, commentaries, or projects constitute the remaining percent of final mark
- All assessments are marked on a level 1-7 scale

Selecting Courses within the IB Framework

3 SL Courses

3 HL Courses

+

ToK

Remember, summer school is a good option for additional course interests

IB students will study 3 SL courses

What does the SL Designation mean?

- SL Subjects are 2 semesters long
- 2 SL exams are written at the end of the anticipated (grade 11) year - SL math and an additional optional SL course
- The 3rd SL subject - SL French is completed at the end of the diploma (grade 12) year.

IB students will study 3 HL Courses

What does the HL designation mean?

- HL courses are 3 semesters long - Typically 1 semester in the anticipated year (grade 11) and 2 semesters in the diploma year (grade 12)
- 3 HL exams are written at the end of the Diploma Year (grade 12)

IB students will study 3 HL Courses

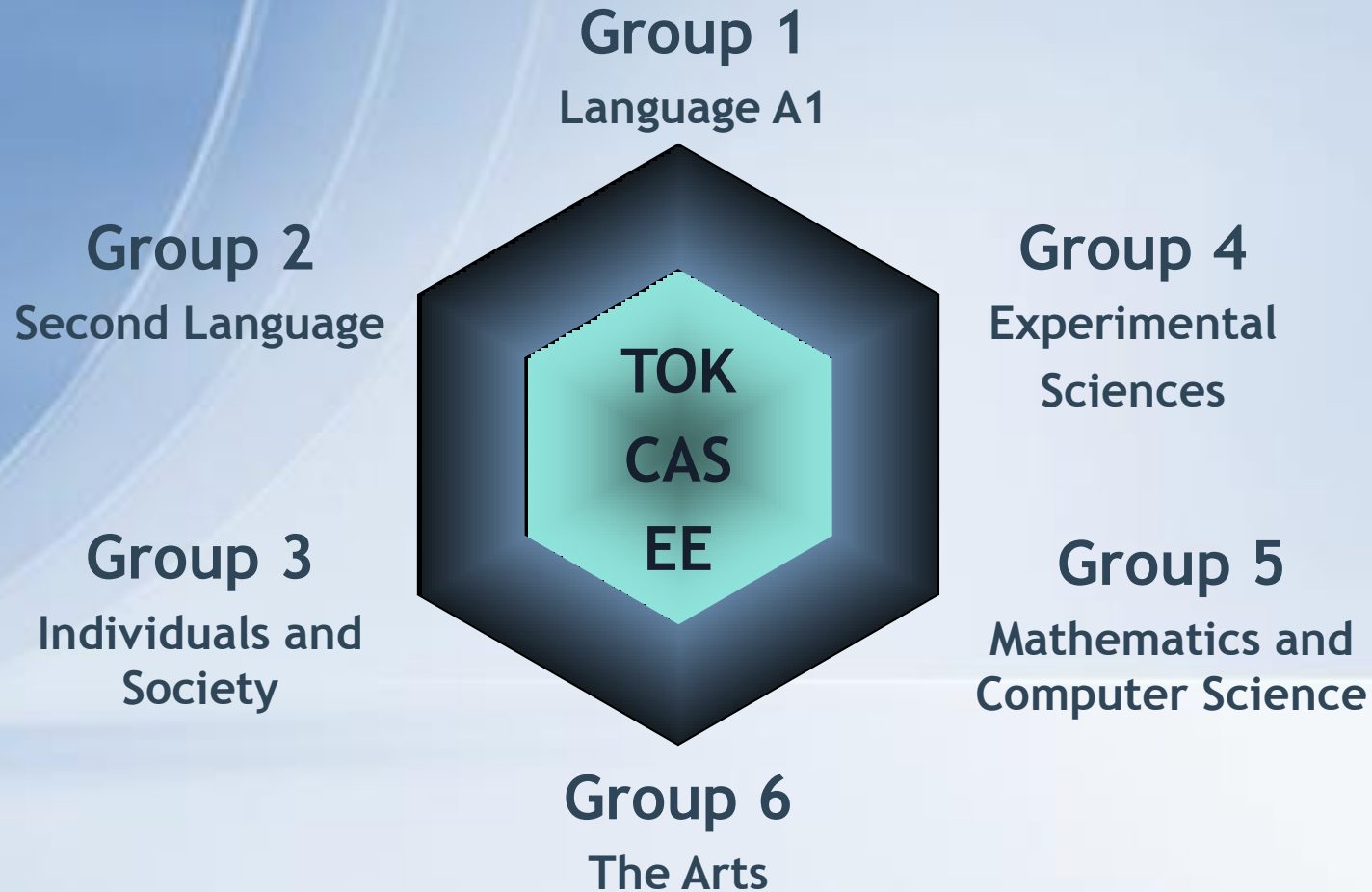
What does the HL designation mean?

- HL Subjects are not necessarily harder, they are studied in greater breadth and depth than SL courses
- Students must earn an average of 12 points in their 3 HL courses to receive the IB Diploma
- It is recommended that students choose HL subjects that they enjoy and find interesting

Grade 10 students
must select

1 subject
from each of the
6 subject areas of the
IB Hexagon

Diploma Subject Areas



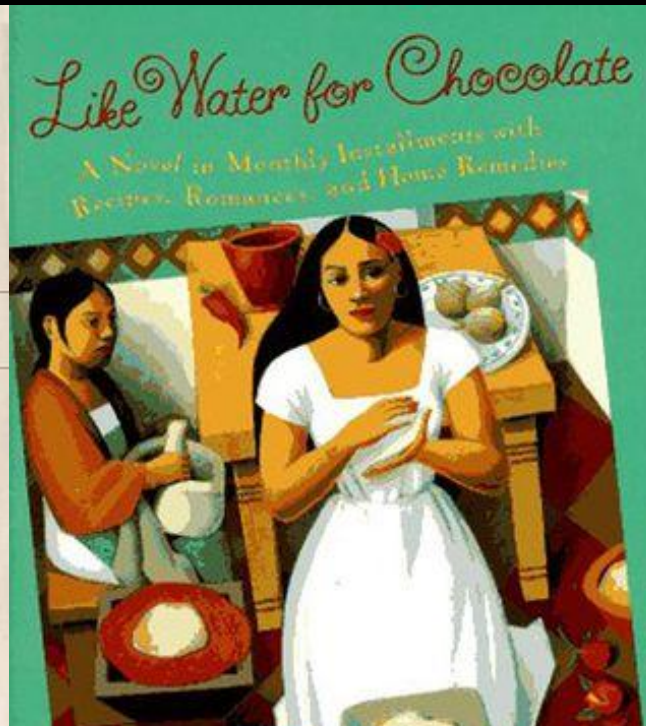
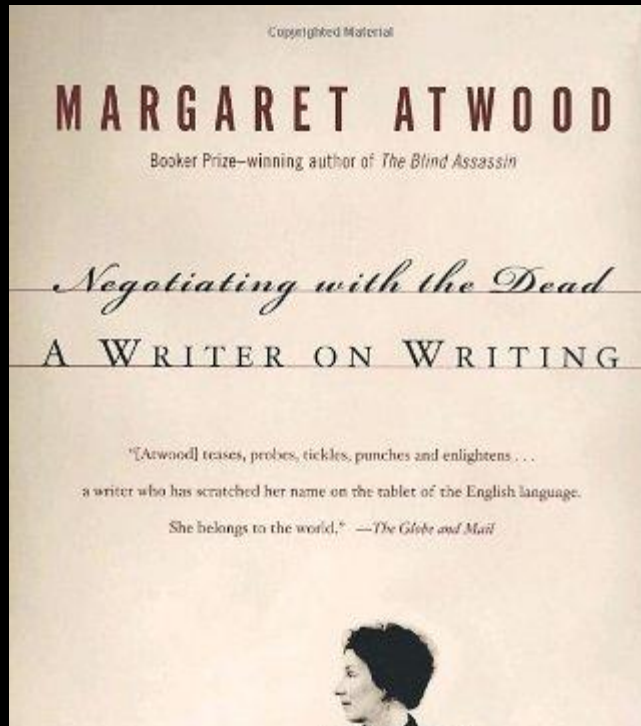
Glenforest Compulsory Course Selections

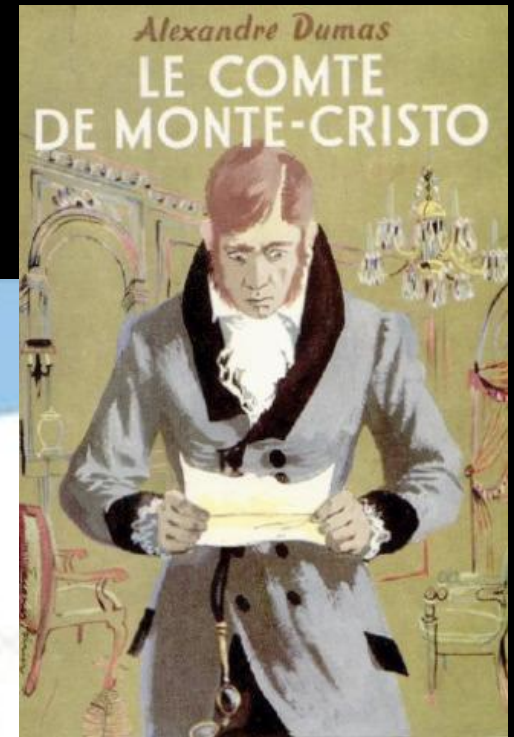
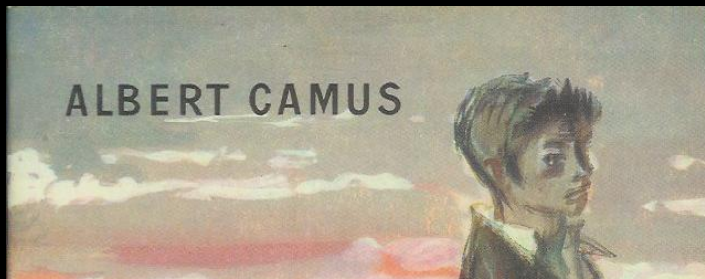
Group 1 Language A = English HL

Group 2 Language B = French SL

TOK Theory of Knowledge
(Grade 12 - diploma year)

English HL





L'Organisation internationale de la Francophonie



"La Francophonie: Allons-y!"

French B SL

**Does “knowing” something imply
“understanding” it?**

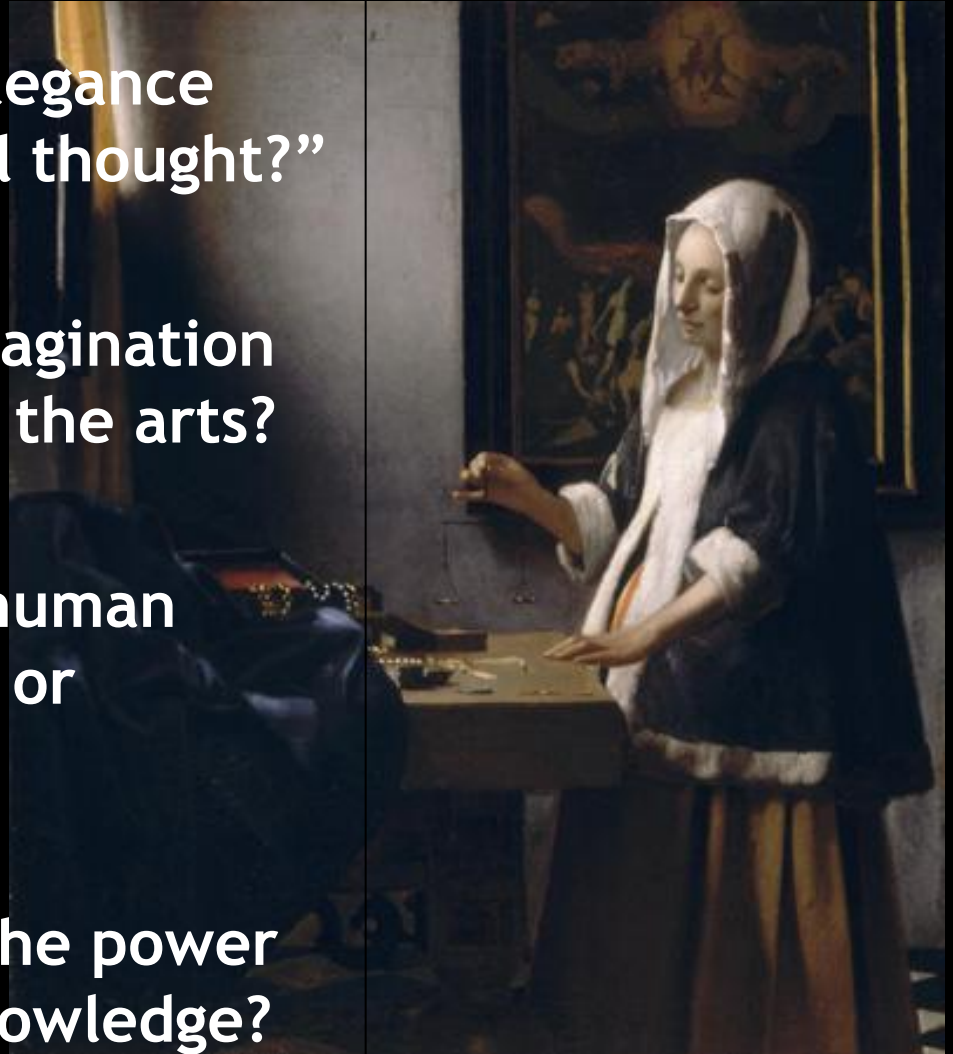
ToK

**Do the terms beauty and elegance
have a role in mathematical thought?”**

**What role do reason and imagination
play in science, history and the arts?**

**Which tells us more about human
nature: biology, psychology or
literature?**

**Does evidence alone have the power
to justify calling a belief knowledge?**



Course Selections

Diploma Students then choose 1 course from each of

Group 3 **Individuals and Society**

History HL

Psychology HL Economics HL

A classical painting of Napoleon Bonaparte on a white horse, wearing a red and gold military uniform with a bicorne hat. The background is a dramatic, cloudy sky. The word 'History' is written in a large, blue, serif font in the upper right corner.

History HL

**IN HIS *SYNTHESIS OF RESEARCH ON CRITICAL THINKING*,
EDUCATIONAL RESEARCH PROFESSOR STEPHEN NORRIS
CONCLUDES THAT:**

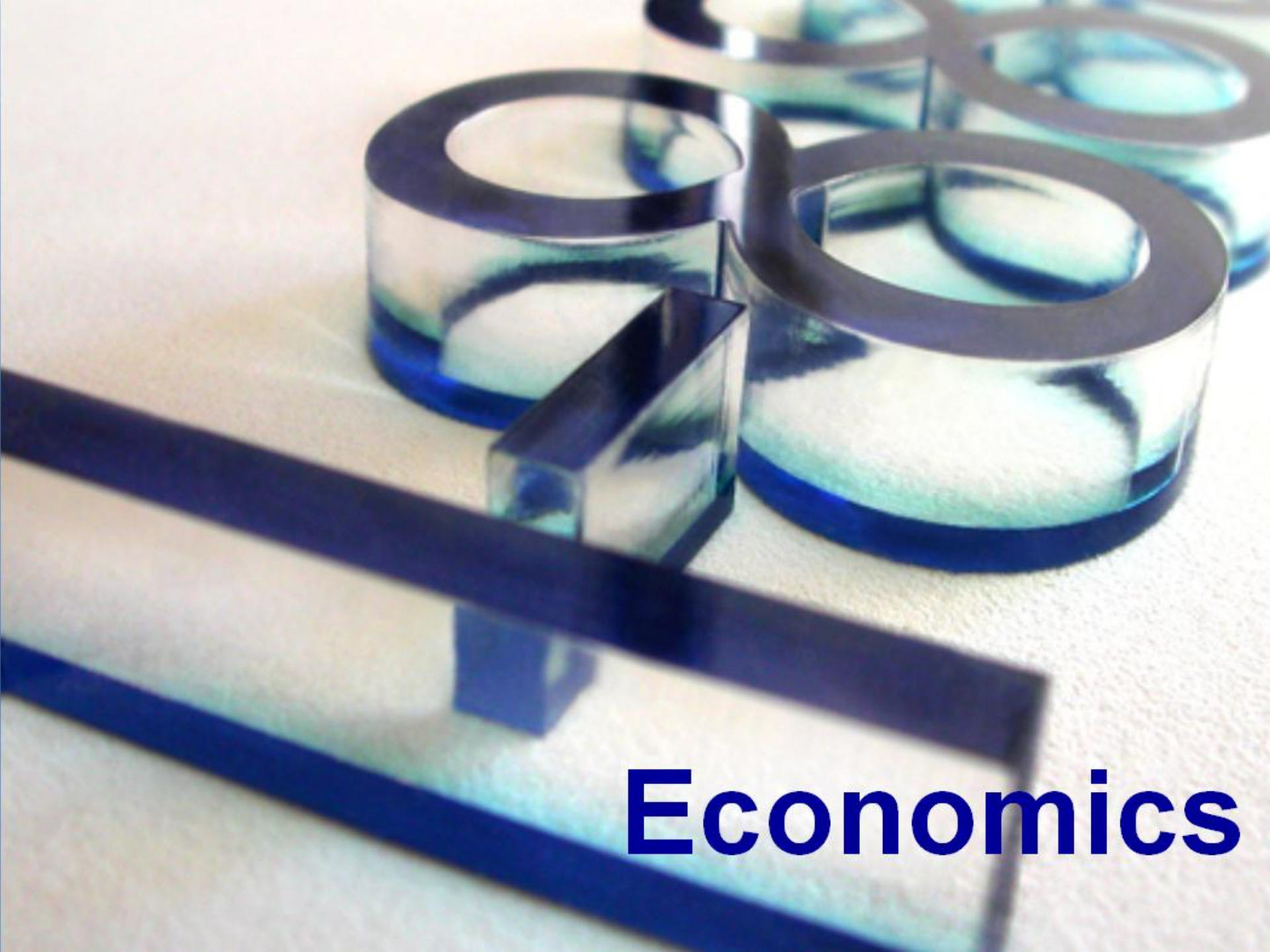
THE ABILITY TO THINK CRITICALLY IS NOT WIDESPREAD...

**MOST STUDENTS WHO HAVE NOT BEEN TAUGHT TO THINK
CRITICALLY DO NOT SCORE WELL ON TESTS THAT
MEASURE STUDENTS' ABILITY TO
RECOGNIZE ASSUMPTIONS,
EVALUATE ARGUMENTS,
APPRAISE INFERENCES**

Psychology HL

*“Enlightenment is not
imagining figures of
light but making the
darkness conscious.”*

Carl Jung



Economics

Course Selections

Diploma Students then choose 1 course from each of

Group 4 Experimental Sciences

Biology SL

Biology HL

Chemistry SL

Chemistry HL

Physics SL

Science

“All truths are easy to understand once they are discovered; the point is to discover them.” *Galileo Galilei*

“My goal is simple. It is a complete understanding of the universe, why it is as it is and why it exists at all.”

Stephen Hawking

Course Selections

Diploma Students then choose 1 course from each of

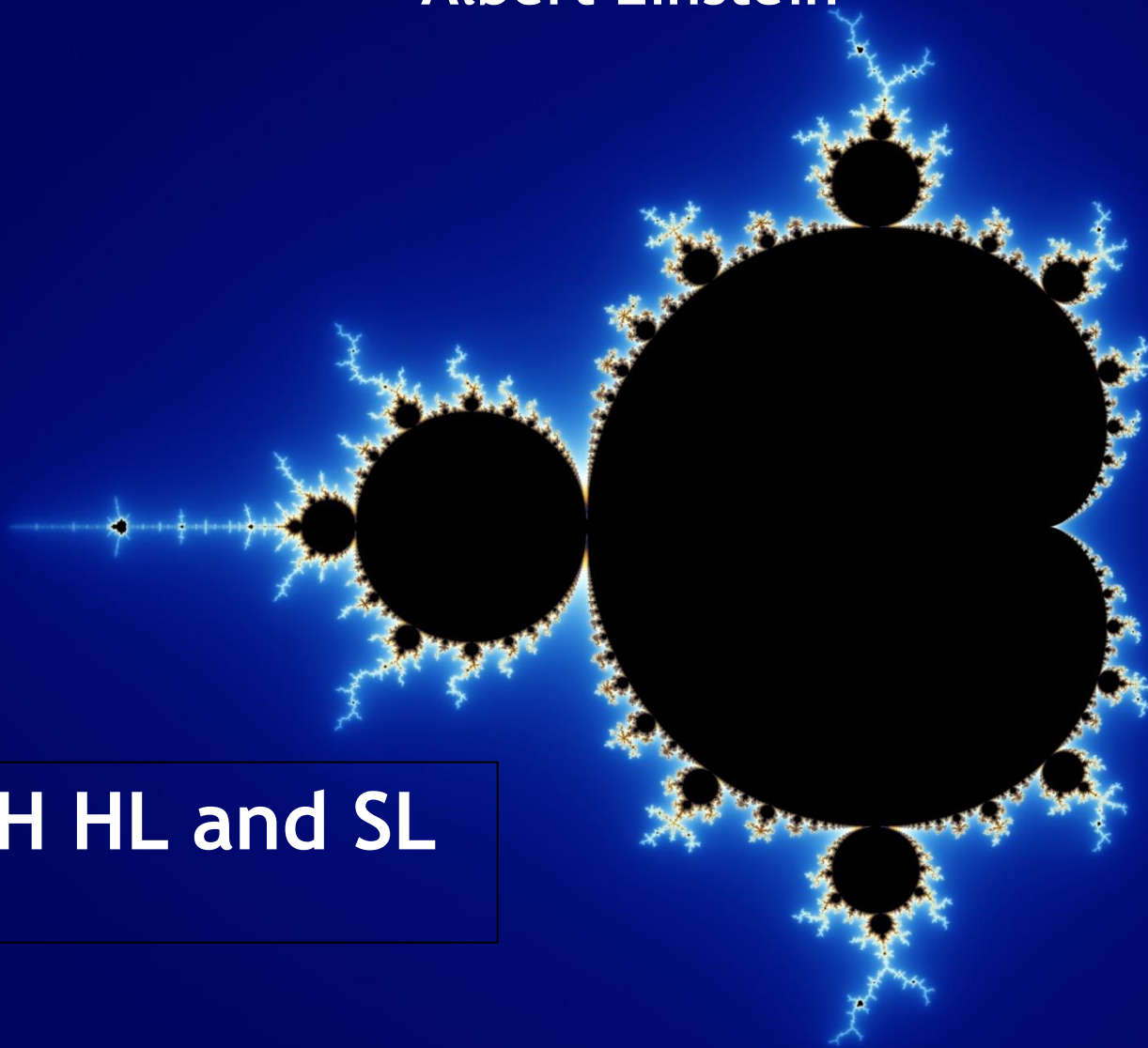
Group 5 Mathematics

Mathematics SL

Mathematics HL

Not everything that counts can be counted, and
not everything that can be counted counts.

Albert Einstein



MATH HL and SL

Course Selections

For the final course, students choose a course from

Group 6 The Arts

SL Music

HL Music

SL Visual Arts

HL Visual Arts

Or Students

may replace the arts option with an additional course from either Group 3 or 4

A reason for art is to convince, inform, inspire, criticize, persuade, make the world a better place



A reason for art is to help us pre visualize ideas for buildings, bridges, cities, and everything else that is imagined before it is made

IB Art

IB Music

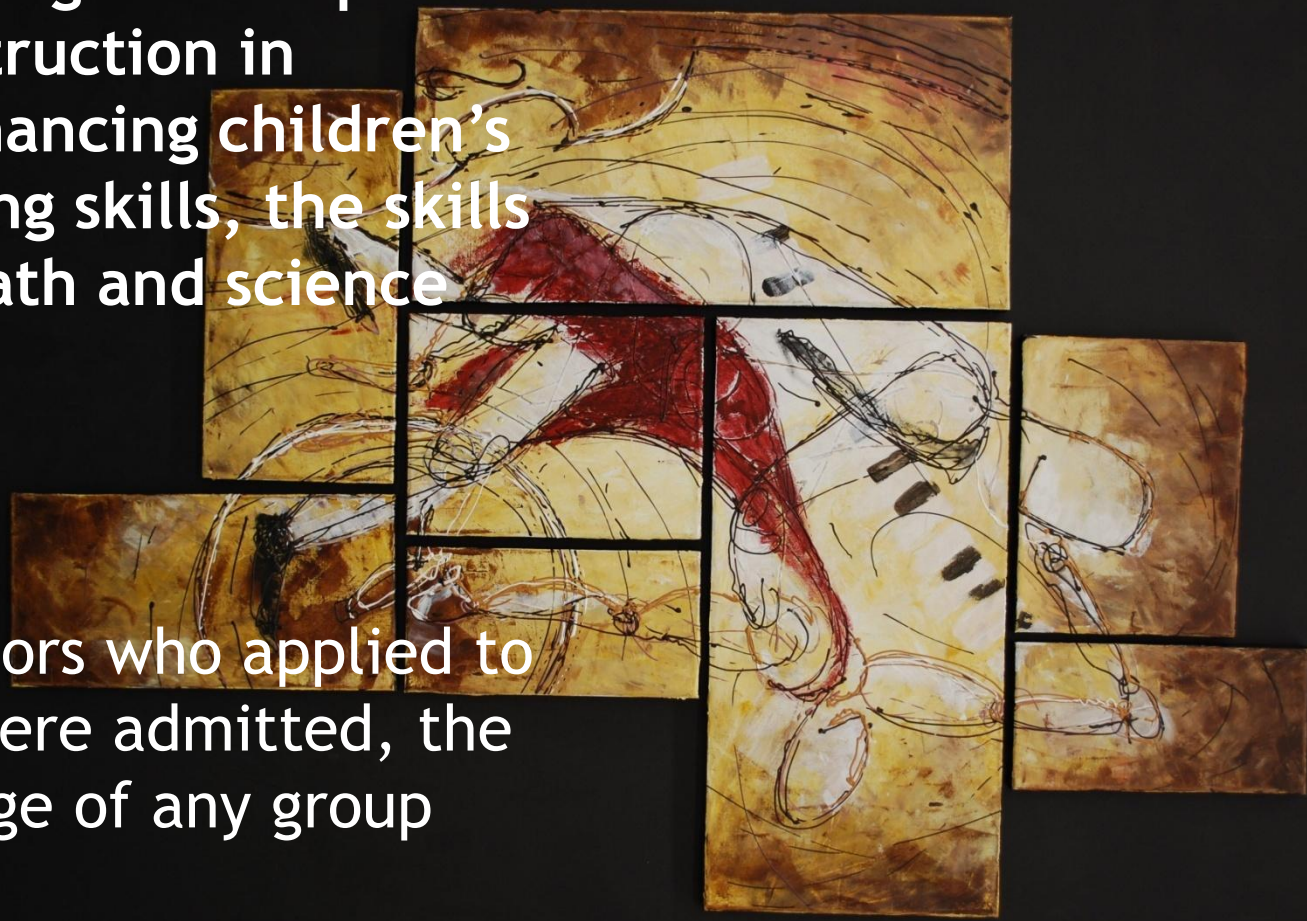
Did you know:

That Music Training is far superior to computer instruction in dramatically enhancing children's abstract reasoning skills, the skills necessary for math and science

And

66% of music majors who applied to medical school were admitted, the highest percentage of any group

Maybe you should consider IB Music



Course Selections

In addition to the 3 compulsory courses listed on the options sheet,

Students must select:

**2 additional HL courses and
2 additional SL courses**

Selecting Courses

To help make your course selection, we recommend that you consider the following:

- Select courses you want
- Select subjects for which you have a Passion
- Consider University requirements
- Balance strengths and challenges
- Try to design a balanced program for yourself
- Remember the courses you choose are a 2 year commitment

Selecting Courses

Course offerings have been considered to provide combinations of courses which are complementary.

Remember:

- All courses have equal value - a potential of 7 points
- The message is that the IB Diploma as a whole is seen to be of more value than individual courses
- Don't worry about SL or HL - if you are interested in a subject which is only offered at the HL or SL level use that as a starting point for building your diploma package

IB Courses

- Courses are marked on a scale of 1 - 7
- Students earn points (1 - 7) for each course completed.
- To earn a Diploma, students must earn a min of 24 points
- Min. 12 points in the HL courses and
- Min of 9 points in SL courses

IB vs. Ontario Curriculum

IB Expectations:

- 1 final externally marked exam in May and 1 major internal assessment
- Courses Assessed in Levels 1-7 and final mark assigned by IB
- Courses choices are limited but balanced
- Courses are either 2 or 3 semesters in length allowing in-depth study
- Liberal Arts Education

Ontario Expectations:

- Final exam or Culminating Activity make up a smaller percentage of the final mark.
- Courses are Assessed in percentages
- More choices and flexibility
- Courses are 1 semester long
- Students are able to concentrate on specific subject areas.

Why continue in the IB Programme ?

- Your child loves to learn, loves school and loves a challenge
- The opportunity to study subjects in greater depth (over 3 semesters for HL courses)
- It provides a well rounded liberal arts education
- International Mindedness
- International Recognition
- World - wide Exams
- Excellent preparation for University due to the rigours of the programme, the Extended Essay, CAS and the TOK course which is unique to IB

What happens if you feel that the IB Programme is not for you?

In reference to the Peel District School Board Regional Programme Policy # 73.

If a student leaves a regional Program, they are required to return attend their home school.

Certificates

Students who do not complete the DP could access certificate courses. Only SL courses are available as certificates.

Enrolling in certificate courses happens for a variety of reasons and placement in a certificate course depends on a number of factors:

- Review by the IB Coordinator and IB counsellor
- Course Enrollment
- Timetable limitations

Fees

The IB Diploma fees are \$2,400.00 for the 2 years
Please provide 4 post dates cheques of
\$600.00 each dated:

Feb. 28, 2011

Sept. 30, 2011

Feb. 28, 2012

Sept 28, 2012

Please print Student Name and Peel Student Number
on each cheque.

Submit cheques with completed option sheets to
Ms. Holloway the main office.

Fees are non refundable after the date on the cheque.
(A receipt will be issued)

Course Selections Process

All Grade 10 Students
must fill out their options:

on line (open Feb 11 - Feb 21)

and

complete an option sheet (Due Feb 18)

Completed Option Sheets and cheques to be
handed in to Ms. Holloway in the main
office by Feb 18, 2011

In Summary

- “The IB Programme develops the whole student, helping students grow intellectually, socially, aesthetically and culturally. It provides a broad and balanced education that includes science and humanities, language and mathematics, technology and the arts. The programme teaches the students to think critically and encourages them to draw connections between areas of knowledge and to use the problem solving techniques and concepts from many disciplines.” CASIE

IB Learner Profile

- If you are wondering if your child is suited to the IB program please refer to the IB learner Profile on your handout.
- In addition, our teachers have compiled a list of characteristics to describe a successful IB student:
 - bilingual or multilingual
 - self disciplined
 - self-motivated
 - organized
 - "loves learning"
 - persistent
 - responsible for their own actions
 - committed to the learning process
 - independent learner
 - perseverance
 - well- rounded
 - inquisitive
 - hard-working
 - grounded, mature



The International Baccalaureate Diploma Programme

the challenge awaits...

For more information, visit us
online at:

www.glenforestlibrary.com

To learn more about the IB Programme,
visit:

www.ibo.org